

ROTO-JET PUMP

High Pressure Pitot Tube Pumps

Excellent
Power & Industrial
Solutions



Model RG 3x2®
Grease Lubricated

High Pressure Single-Stage, Centrifugal Pump With Advanced Pitot Tube Technology

Advanced Design

- High pressure without high speed
- Flexible - performance can be adjusted by changing the pitot tube
- Simple - only two basic working parts

Dependable performance

- Hydraulically stable along the entire performance curve and beyond BEP
- Low minimum flow requirement
- Rugged design - most reliable high pressure pump in the marketplace

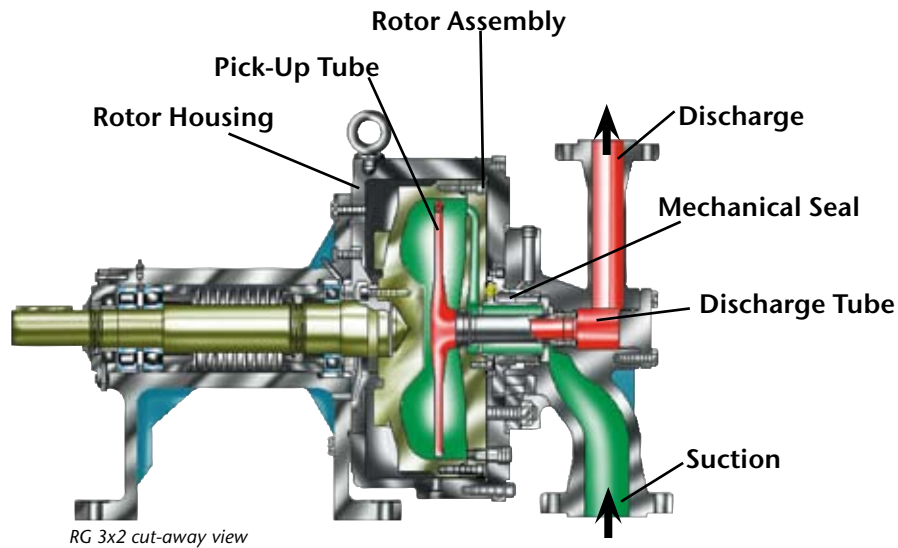
Enhanced Reliability

- Smooth, pulsation-free flow
- Low pressure mechanical seal is easily maintained
- Isolated bearing pedestal to minimize risk of bearing contamination

RG 3x2® Pump Features

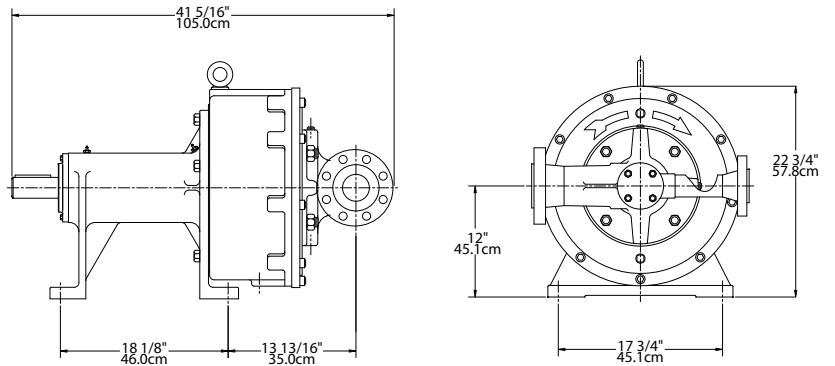
- Materials of construction: ductile iron, carbon steel, stainless steel, CA6NM, and CD4MCu.
- Single or double mechanical seal
- Threaded or flanged connections
- Grease lubricated bearings





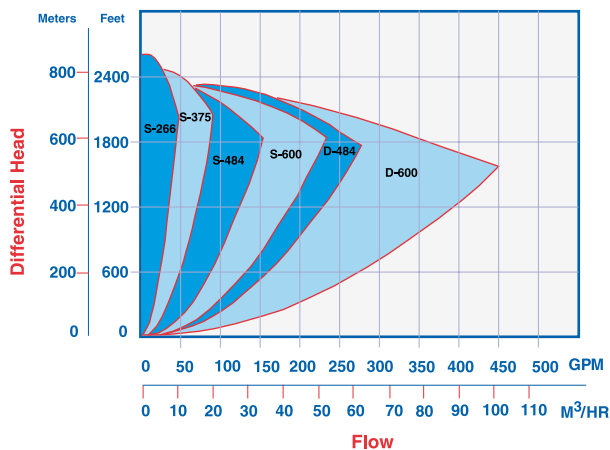
Typical Roto-Jet Model RG 3x2® Applications

- Food and Beverage cleaning systems
- Reverse osmosis systems
- Automotive gun drilling coolant
- Spraying/washing systems
- High pressure paper shower
- Circuit board wash systems
- Water/process injection systems
- Seal flushing systems
- Boiler feed/cleaning systems
- And many, many more...



Note: Dimensions are for general reference only and will vary with actual model selected.

Operating Range



Specifications	RG 3x2®	
Maximum Temperature (With Flush)	180° F	82° C
Maximum Suction Pressure	250° F	121° C
Maximum Head	200 PSI	14 BAR
Maximum Speed	2600 Ft.	792 m
Maximum Flow	4380RPM	4380 RPM
Maximum Horsepower	400 GPM	91 m ³ /hr
Weight	400 HP	300 KW
Lubrication	870 lbs.	395 kg
	grease	grease
Materials of Construction		
	St. Steel	Ductile Iron
Rotor	316 St. Steel	Ductile Iron
Rotor Cover	316 St. Steel	Ductile Iron
Manifold	316 St. Steel	Ductile Iron
Endbell	Ductile Iron	Ductile Iron
Pickup Tube*	17-4 PH	17-4 PH
Shaft	AISI 4140	AISI 4140

*Also available in 718 Inconel.

Weir Specialty Pumps

440 W. 800 South
P.O. Box 209 (84110-0209)
Salt Lake City, UT 84101
USA

Tel: 1 801 359 8731
Fax: 1 801 530 7531
email: info@weirsp.com
www.weirsp.com

© 2009 Weir Specialty Pumps. All Rights reserved. Bulletin RJ-RG3X2

Excellent
Power & Industrial
Solutions

